



VINTAGE DECKING

Teckwood's Vintage composite decking board gives you the natural beauty of timber but with the performance of contemporary outdoor decking. The Vintage decking board is unlike conventional decking, the moulds used have been modelled on natural timbers and are almost indistinguishable from real wood, yet designed to outperform it and withstand the most challenging of conditions.



Eco friendly



Low maintenance



Anti slip



Will not rot



UV Stable



Easy clean



long lasting

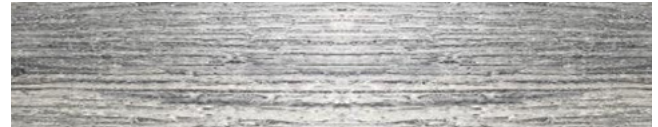


Low Life
Cycle Cost

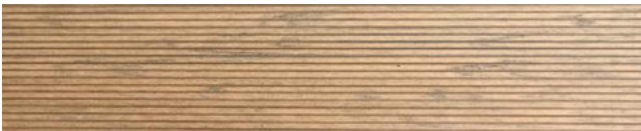
The essential craftsmanship and care taken during the manufacturing process is reflected in our high performance Vintage composite decking. The passion for detail and ultimate true to life features are the perfect blend of good looks and great low maintenance performance.



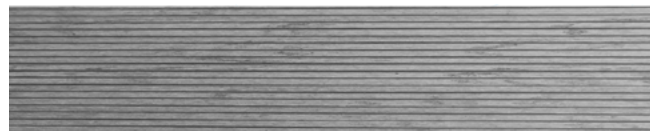
SANDWOOD TEXTURED



SMOKED GREY TEXTURED



SANDWOOD CASTELLATED



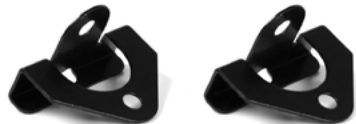
SMOKED GREY CASTELLATED

142 x 10 x 3600mm textured dual sided anti slip composite decking board.



MOUNTING CLIP

46 x 14mm black electro plated concealed stainless steel mounting clip.



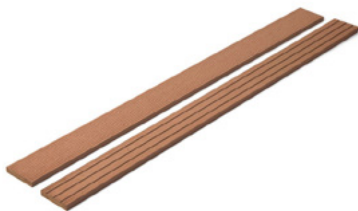
STARTER CLIP

36 x 24mm black electro plated stainless steel starter clip.



WOOD SCREW

4 x 35mm black electro plated stainless steel wood screw.



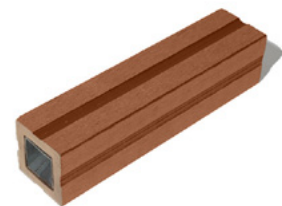
EDGING TRIM

142 x 10 x 3600 mm solid reversible colour infused finishing trim available in four contemporary colours.



STEP SECTION

56 x 56 x 3600mm colour infused decking step section available in four contemporary colours.



COMPOSITE JOIST

50 x 50 x 3600mm composite joist or 50 x 50 x 3000mm composite joist steel reinforced.

